

Prohibited and Restricted Species in Michigan

Prohibited Aquatic Plant Species

African oxygen weed, *Lagarosiphon major*



Photo: John Clayton © National Institute of Water & Atmospheric Research, New Zealand (NIWA)



Photo: V. Ramey © University of Florida

Brazilian elodea, *Egeria densa*



Photo: © Department of Ecology, State of Washington.



Photo: © Department of Natural Resources, Wisconsin.

Cylindro, *Cylindrospermopsis raciborskii*

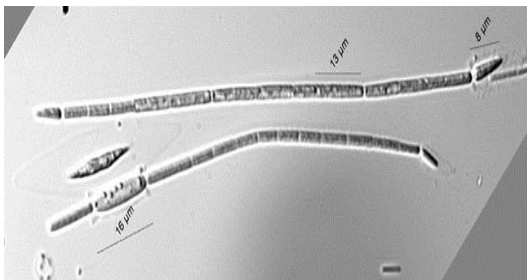


Photo: © Rex Lowe

Prohibited and Restricted Species in Michigan

European Frogbit, *Hydrocharis morsus-ranae*



Photo: Dave Brenner © Michigan Sea Grant



Photo: Stephen J. Darbyshire

Fanwort, *Cabomba caroliniana*



Photo: Alison Fox © 1996

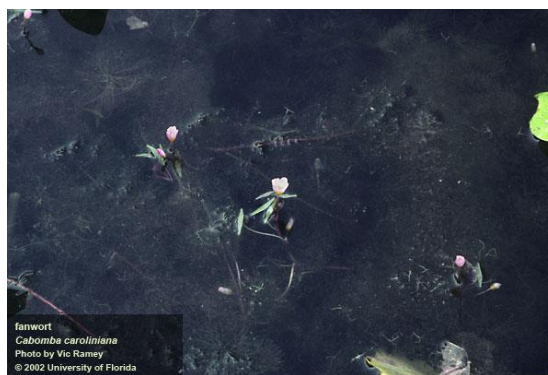


Photo: Vic Ramey © 2002 University of Florida

Giant Hogweed, *Heracleum mantegazzianum*



Photo: Terry English © USDA APHIS PPQ



Photo: © New York State Department of Environmental Conservation

Prohibited and Restricted Species in Michigan

Giant Salvinia, *Salvinia molesta*, *auriculata*, *biloba* or *herzogii*



Photo: Troy Evans © Eastern Kentucky University



Photo: Barry A. Rice © The Nature Conservancy.
Showcasing egg-beater shaped hairs.

Hydrilla, *Hydrilla verticillata*



Photo: Vic Ramey © 2000 University of Florida



Photo: Gary Pinnel © 2012 Highlands Today News

Japanese knotweed, *Fallopia japonica*



Photo: Tom Heutte © USDA Forest Service, Bugwood.org



Photo: © 2009 Kutbax Arboricultural Contractors Ltd
- UK Reg No. 06475048

Prohibited and Restricted Species in Michigan

Parrots feather, *Myriophyllum aquaticum*



Photo: Kerry Dressler © 1996



Photo: © 2008 Wisconsin Department of Natural Resources

Starry stonewort, *Nitellopsis obtusa*



Photo: © U.S. Geological Survey Great Lakes Science Center



Photo: © 2009-2010 Michigan Lake Info

Water chestnut, *Trapa natans*



Photo: Mike Naylor © Maryland Department of Natural Resources



Photo: Leslie J. Mehrhoff © University of Connecticut

Prohibited and Restricted Species in Michigan

Yellow floating heart, *Nymphoides peltata*



Photo: M. Malchoff © Lake Champlain Sea Grant/VTDEC



Photo: Vic Ramey © 2002 University of Florida

Prohibited Bird Species

Eurasian collared dove, *Streptopelia decaocto*



Photo: Rick van der Weijde © 2006



Photo: Rosco P. Herbtrane © 2010

Prohibited Crustacean Species

Killer shrimp, *Dikerogammarus villosus*



Prohibited and Restricted Species in Michigan

Red swamp crayfish, *Procambarus clarkia*



Photo: Brome McCreary, USGS

Yabby, *Cherax destructor*



Photo: NSW Aquaculture Association Inc.

Prohibited Fish Species

Bighead carp, *Hypophthalmichthys nobilis*



Photo: © 2012 Conservation Commission of Missouri



Photo: © 2012 USGS

Prohibited and Restricted Species in Michigan

Bitterling, *Rhodeus sericeus*

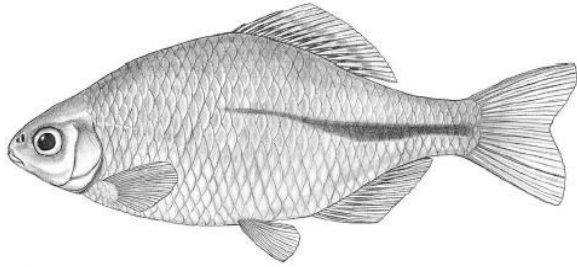


Photo: Bitterling, TU 8889, 71.2 millimeter SL, from Westchester County, N.Y.



Photo: Wil Meinderts/Foto Natura/Getty Images © 2012 Discovery Communications, LLC

Black carp, *Mylopharyngodon piceus*



Photo: © Leo G. Niko

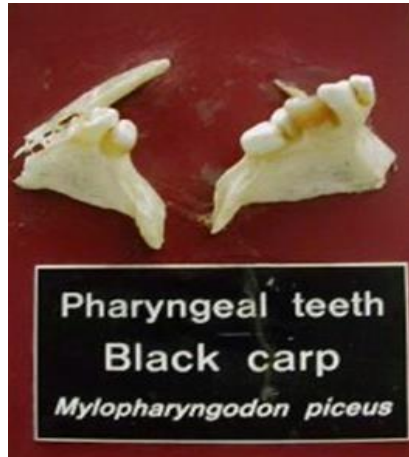


Photo: © Indiana Department of Natural Resources

Eurasian ruffe, *Gymnocephalus cernuus*



Photo: John Lyons © Wisconsin DNR



Photo: Gary Cholwek © U.S. Geological Survey, Bugwood.org.

Prohibited and Restricted Species in Michigan

Grass carp, *Ctenopharyngodon idellus*



Photo: Noel M. Burkhead © USGS



Photo: © Indiana Department of Natural Resources

Ide, *Leuciscus idus*



Photo: © Steffen Zienert

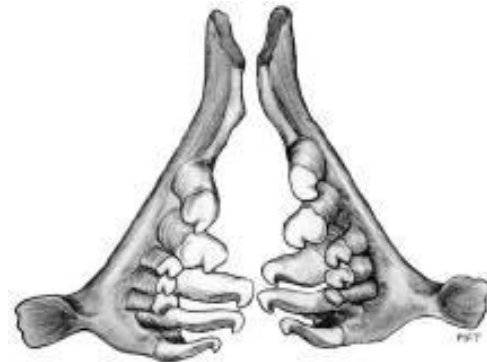


Photo: © Pharyngeal teeth (3,5-5,3) of Ide, UF 85165,113 millimeter SL, from the Danube River, Austria

Japanese weatherfish, *Misgurnus anguillicaudatus*



Photo: © Windsor Aguirre



Photo: Noel M. Burkhead © USGS

Prohibited and Restricted Species in Michigan

Round goby, *Neogobius melanostomus*



Photo: © Center for Great Lakes and Aquatic Sciences Archive, University of Michigan, Bugwood.org



Photo: E. J. Crossman and E. Holm © ASSESSMENT OF SPECIES DIVERSITY IN THE MIXEDWOOD PLAINS ECOZONE FRESHWATER FISHES

Rudd, *Scardinius erythrophthalmus*



Photo: Noel M. Burkhead © USGS



Photo: Gordon England © 2004

Silver carp, *Hypophthalmichthys molitrix*



Photo: © Department of Fisheries and Allied Aquacultures, Auburn University

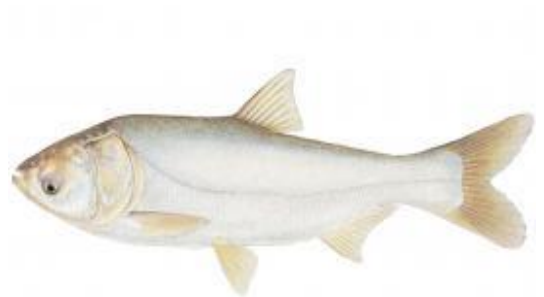


Photo: © 2012 Conservation Commission or Missouri

Prohibited and Restricted Species in Michigan

Snakehead family, *Channidae*



Photo: © Maryland Department of Natural Fisheries



Photo: © Cait Gillespie

Stone moroko, *Pseudorasbora parva*



Photo: © Harka, A. From EOL (2014)

Tench, *Tinca tinca*



Photo: © Steffen Zienert

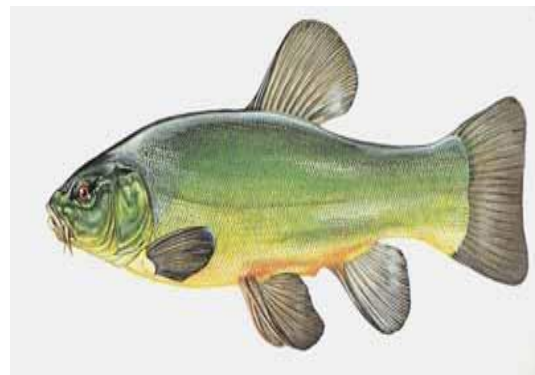


Photo: © Mid Devon District Council

Prohibited and Restricted Species in Michigan

Tube-nose goby, *Proterorhinus marmoratus*



Photo: John Lyons © Wisconsin Department of Natural Resources



Photo: © Piet Spaans

Wels catfish, *Silurus glanis*

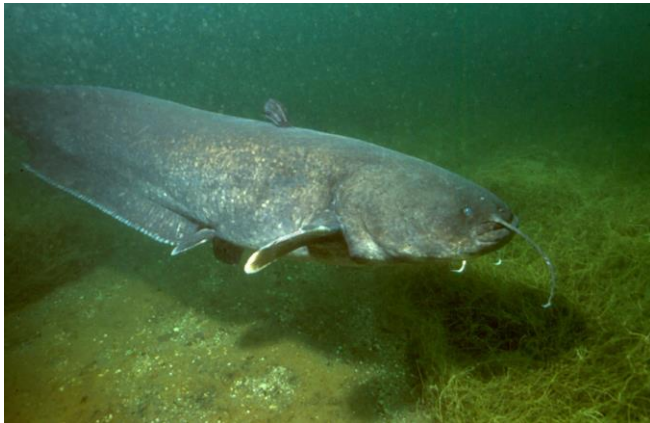


Photo: Wikipedia

Zander, *Sander lucioperca*



Photo: Fish Index

Prohibited and Restricted Species in Michigan

Prohibited Insect Species

Asian longhorned beetle, *Anoplophora glabripennis*



Photo: © Ohio Department of Natural Resources, Forestry Division



Photo: © Todd Murray

Emerald ash borer, *Agrilus planipennis*



Photo: © National Park Service, U.S. Department of the Interior



Photo: © Cornell University

Prohibited Mammal Species

Feral Swine, *Sus scrofa* Linnaeus



Photo: © Michigan DNR



Photo: © Michigan DNR

Prohibited and Restricted Species in Michigan

Nutria, *Myocastor Coypus*



Photo: © U.S. Fish and Wildlife Service



Photo: © Miloš Andera

Prohibited Mollusk Species

Brown garden snail, *Helix aspersa*



Photo: © Hans Arentsen



Photo: © 2001-2012 Green Nature Privacy Policy

Carthusian snail, *Monacha cartusiana*



Photo: © Luboš R. Kolouch



Photo: © Luboš R. Kolouch

Prohibited and Restricted Species in Michigan

Giant African snail, *Achatina fulica*



Photo: © 2005 State of Maine Department of Agriculture Food and Rural Resources



Photo: D.J. Preston © Indian Department of Natural Resources

Girdled snail, *Hygromia cinctella*



Photo: © Dr. Roy Anderson, MolluscIreland



Photo: © Fvlamoen

Golden mussel, *Limnoperna fortune*



Photo: Wildlife Survey & Photo Service

Prohibited and Restricted Species in Michigan

Heath snail, *Xerolenta obvia*



Photo: © J.M. Hernandez Otero



Photo: indirect: government services © Crown Copyright

New Zealand Mudsnail, *Potamopyrgus antipodarum*



Photo: © U.S. Geological Survey



Photo credit: Mike Gangloff

Photo: © Mike Gangloff

Wrinkled dune snail, *Candidula intersecta*



Photo: © M. Hitchcox, USDA-APHIS-PPQ



Photo: © Dr. Roy Anderson, MolluscIreland

Prohibited and Restricted Species in Michigan

Restricted Aquatic Plant Species

Curly leaf pondweed, *Potamogeton crispus*



Photo: © DotNetNuke Corporation



Photo: Frank Koshore © Wisconsin Department of Natural Resources

Eurasian watermilfoil, *Myriophyllum spicatum*

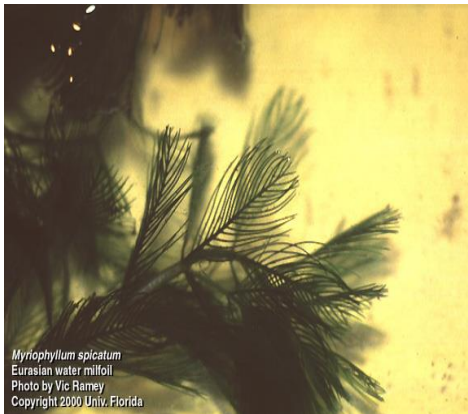


Photo: Vic Ramey © University of Florida



Photo: David Sutton © 1996

Flowering rush, *Butomus umbellatus*



Photo: Gary Fewless © 2002 Cofrin Center for Biodiversity, University of Wisconsin



Photo: Christian Fischer, Gary Fewless © Cofrin Center for Biodiversity, University of Wisconsin

Prohibited and Restricted Species in Michigan

Phragmites or common reed, *Phragmites australis*

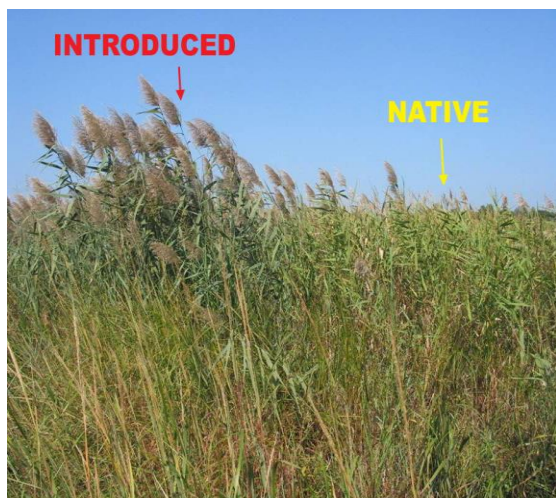


Photo: © 2012 Tip of the Mitt Watershed Council



Photo: © 2012 Tip of the Mitt Watershed Council

Purple loosestrife, *Lythrum salicaria*



Photo: Dave Brenner © Michigan Sea Grant



Photo: Dave Brenner © Michigan Sea Grant

Prohibited and Restricted Species in Michigan

Restricted Crustacean Species

Rusty crayfish, *Orconectes rusticus*



Photo: © 2002 Ashley Baldrige

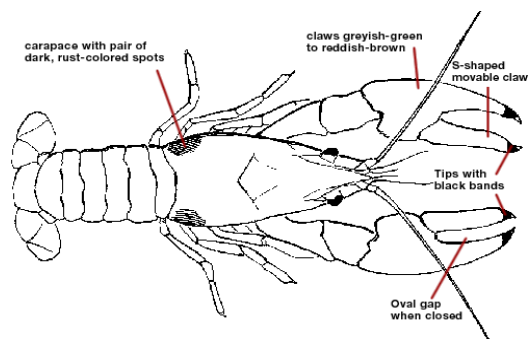


Photo: © 1996 – 2012 Regents of the University of Minnesota

Restricted Mollusk Species

Quagga mussel, *Dreissena bugensis*



Photo: © U.S. Geological Survey



Photo: © U.S. Geological Survey

Zebra mussel, *Dreissena polymorpha*



Photo: Amy Benson © U.S. Geological Survey



Photo: Amy Benson © U.S. Geological Survey